

MONTHLY MEMBERSHIP PROGRESS REPORT

LOCATION ISRAEL

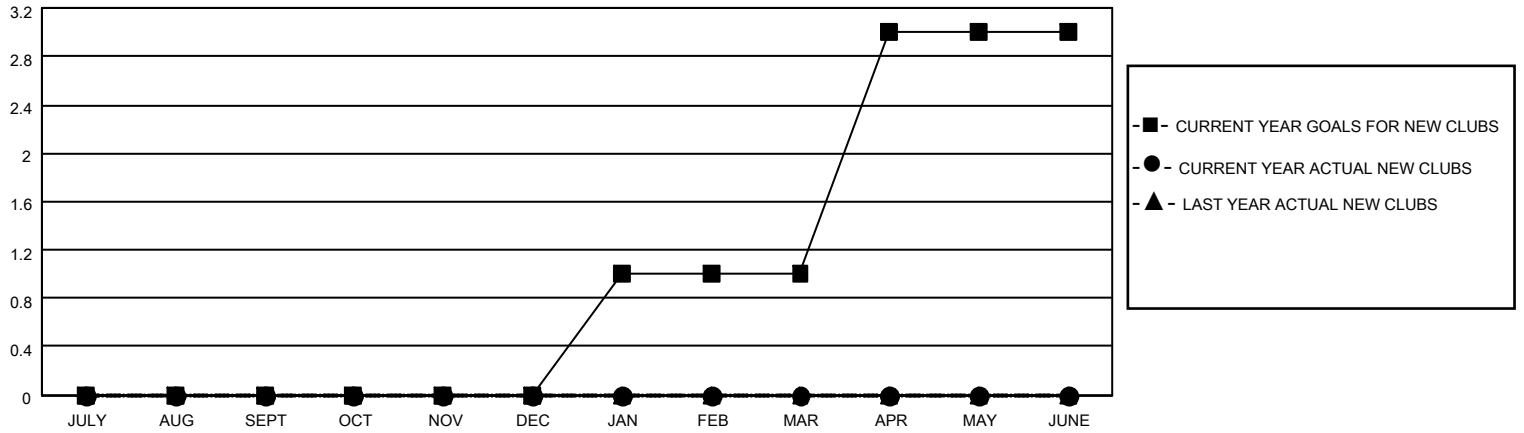
District 128

Results as of: 7/31/2022

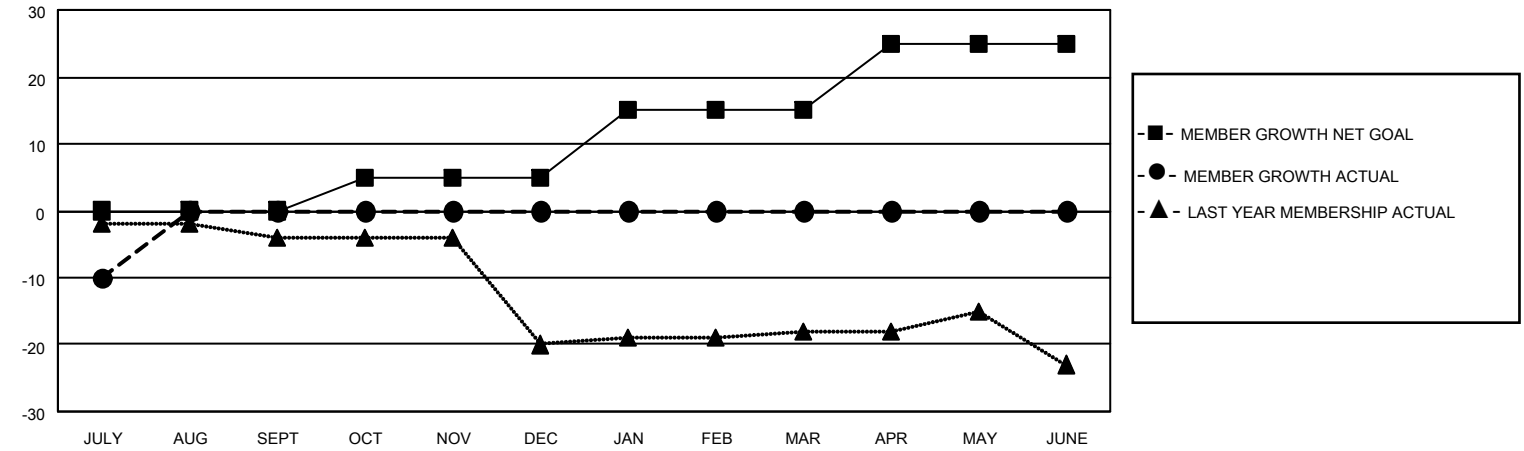
Clubs			
RESULTS FOR 2022-2023			
QUARTER	NEW CLUB GOAL	NEW CLUBS	DROPPED CLUBS
JULY/AUG/SEPT	0	0	0
OCT/NOV/DEC	0	0	0
JAN/FEB/MAR	1	0	0
APR/MAY/JUNE	2	0	0

Members			
RESULTS FOR 2022-2023			
QUARTER	MEMBER GROWTH NET GOAL	MEMBER GROWTH ACTUAL	DROPPED MEMBERS ACTUAL (including transfers)
JULY/AUG/SEPT	0	0	10
OCT/NOV/DEC	5	0	0
JAN/FEB/MAR	10	0	0
APR/MAY/JUNE	10	0	0

GOALS AND ACTUAL NEW CLUBS CUMULATIVE



GOALS AND ACTUAL MEMBERS CUMULATIVE



DROPPED CLUBS: 0	
DROPPED MEMBERS	
DECEASED	0
CLUB CANCELLED	0
OTHER	10
TOTAL	10

0 CLUBS OF 24 ADDED 1 OR MORE NEW MEMBERS
CLICK HERE FOR CUMULATIVE MEMBERSHIP DATA

<u>GENDER DISTRIBUTION</u>	
MALE	273 (42.46%)
FEMALE	370 (57.54%)
NON BINARY	0 (0.00%)
PREFER NOT TO ANSWER	0 (0.00%)
<hr/>	
TOTAL FAMILY UNIT MEMBERS	402
<hr/>	
FAMILY MEMBERS PAYING HALF DUES	201